

A better and more economical solution

Customer case - January 2020



Rogaland Pelsdyrfôrlag AL is one of Norway's largest manufacturers of prepared feeds for agricultural production – including mink feed.

Previously, Maintenance Manager Terje had four Italian lobe pumps for pumping mink feed installed but found that the wear was too high – in fact so high that he would wear out 4-6 pumps every year.

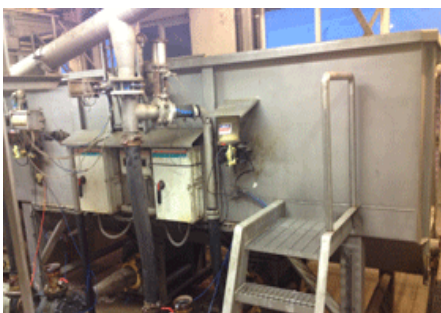
An economical solution

Consequently, he was looking for a better and more economically efficient solution. A solution that would be viable in the long run, requiring minimal maintenance and on an affordable budget.

He needed a durable pump that could pump the finished product 15 meters horizontally and 8 meters vertically in a 250 mm pipe, and he needed to pump 35-45 m³ per hour.

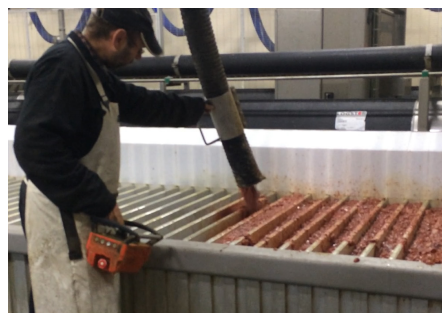


GOING FROM 4 TO 1 PRODUCTION LINE



In cooperation and in close dialogue with the JS Proputec staff, Rogaland Pelsdyrfôrlag AL found a much simpler solution for the application.

JS Proputec advised Terje to replace and consolidate the four production lines into a single line while installing a JS 350/90 lamella pump.



This pump could easily provide the necessary capacity, and it resulted in a simple and low-cost system that fully lives up to Terje's expectations.

Not only does he save money on maintenance costs – there is only one pump to be maintained.



In addition, he experiences a significant reduction in the running costs as the pump only uses 1/3 of the power that was previously used.

Contact us for further information in relation to the specific case - or if you have additional questions.

+45 9890 3566 - info@jsproputec.com